

RealPresence Desktop Installation & Sign In Guide for Mac

Installation

1. Navigate to the following link to download and install RealPresence Desktop:

http://support.polycom.com/PolycomService/support/us/support/eula/rpd/RPDagreement_v3_6_mac_trial.html

2. Click to accept the terms and conditions and then click the **Submit** button. Your download should begin immediately.

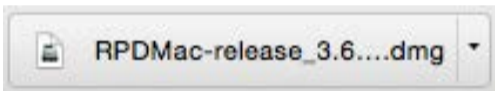
PLEASE NOTE VERSION UPGRADE REQUIREMENTS:

The applications available for download on this page are governed by the terms of an **End User License Agreement (EULA)**. By downloading, installing or using the applications on this page, you agree to comply with the applicable EULA terms and conditions.

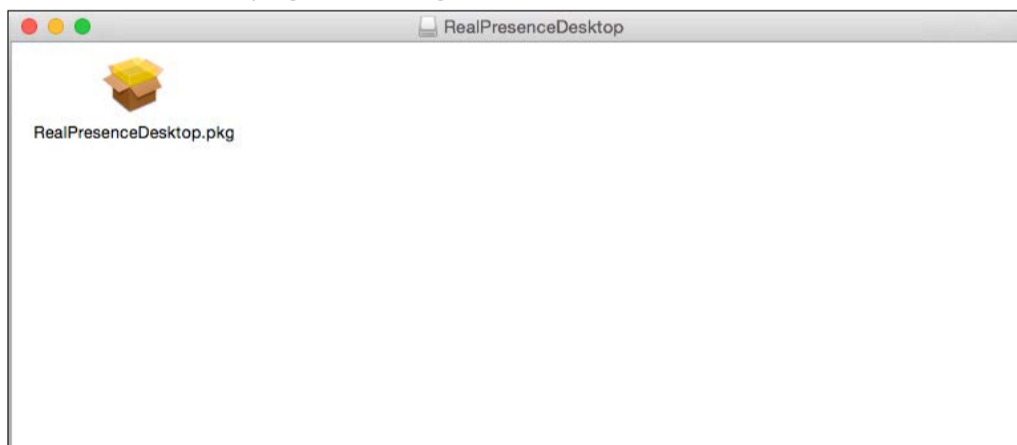
I have read the RPD EULA and accept the terms and conditions of updated RPD EULA.

SUBMIT »

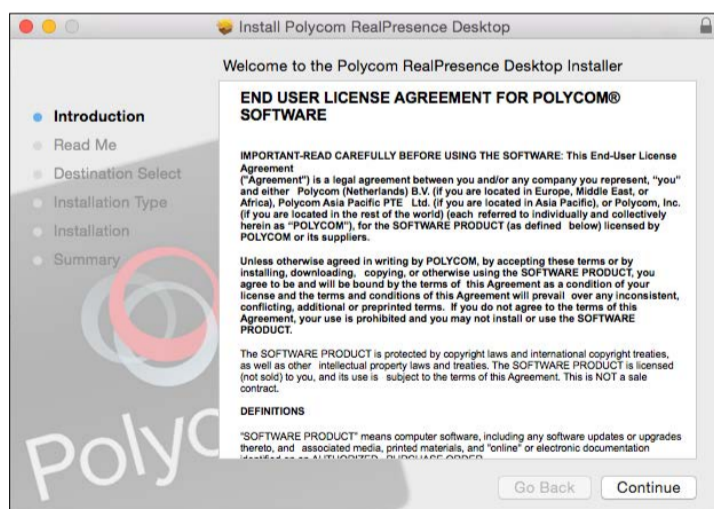
3. Click the download button, then click the **Run** button to begin installing RealPresence Desktop.



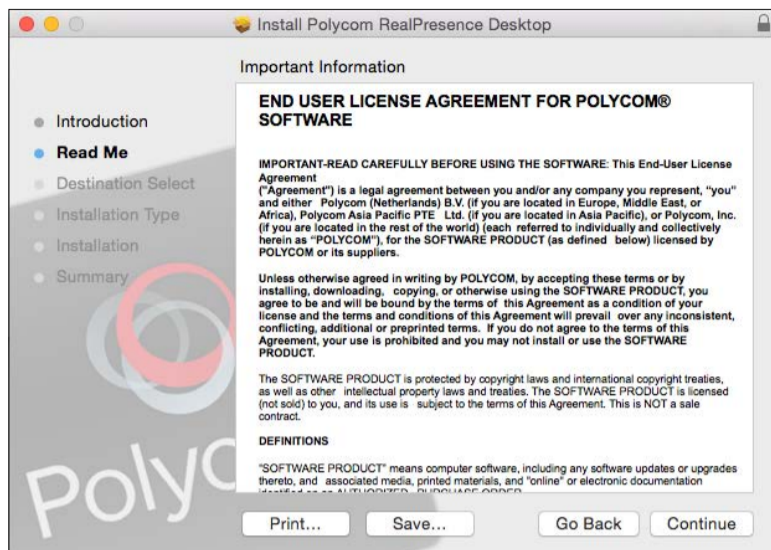
4. Double click the .pkg file to begin the installation.



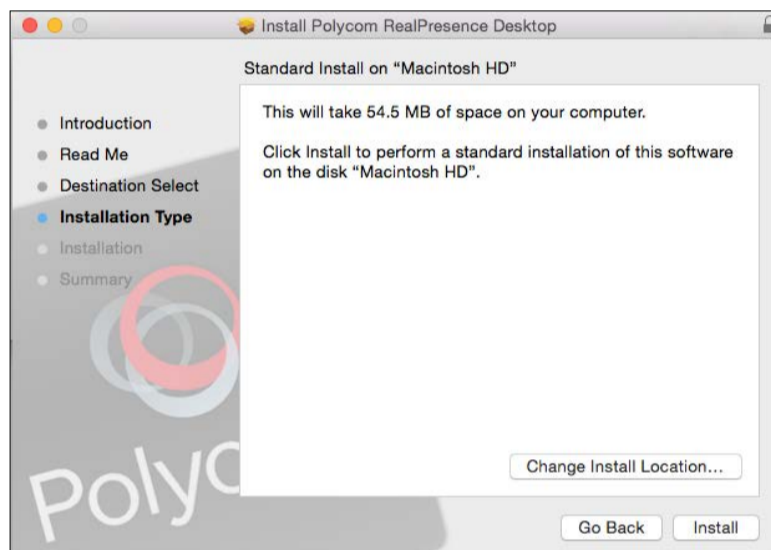
5. Click the **Continue** button.



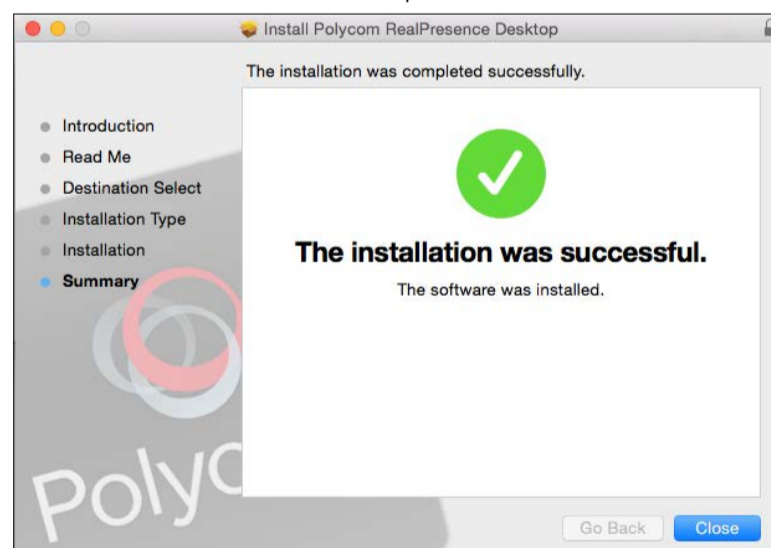
- Click the **Continue** button to accept the End User License Agreement.



- Click the **Install** button to begin installation.

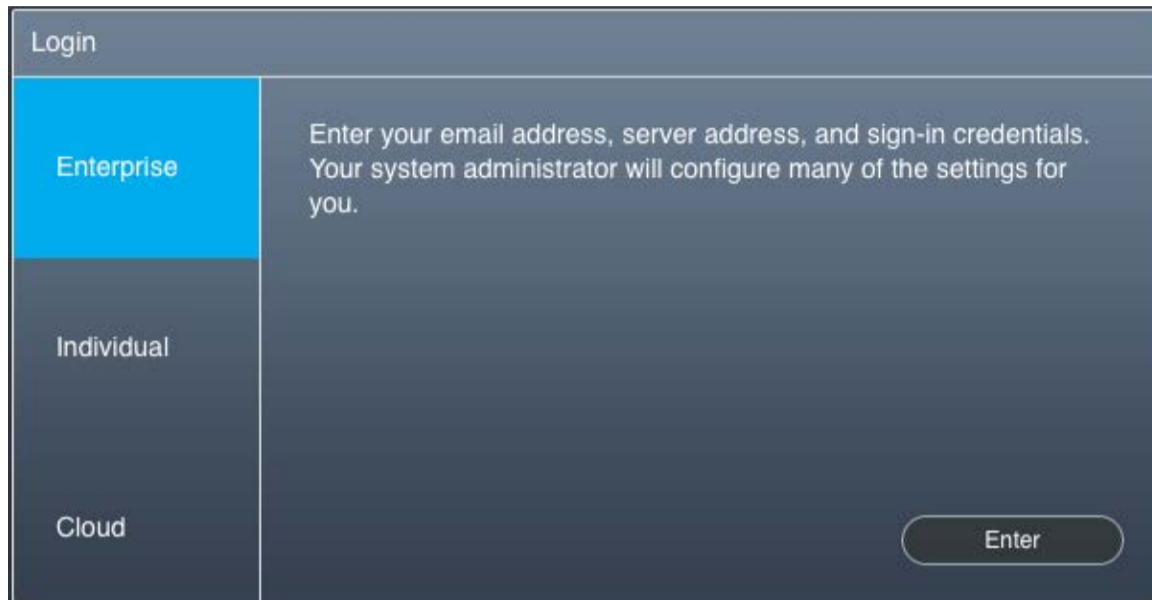


- Once the installation is complete, click the **Close** button.

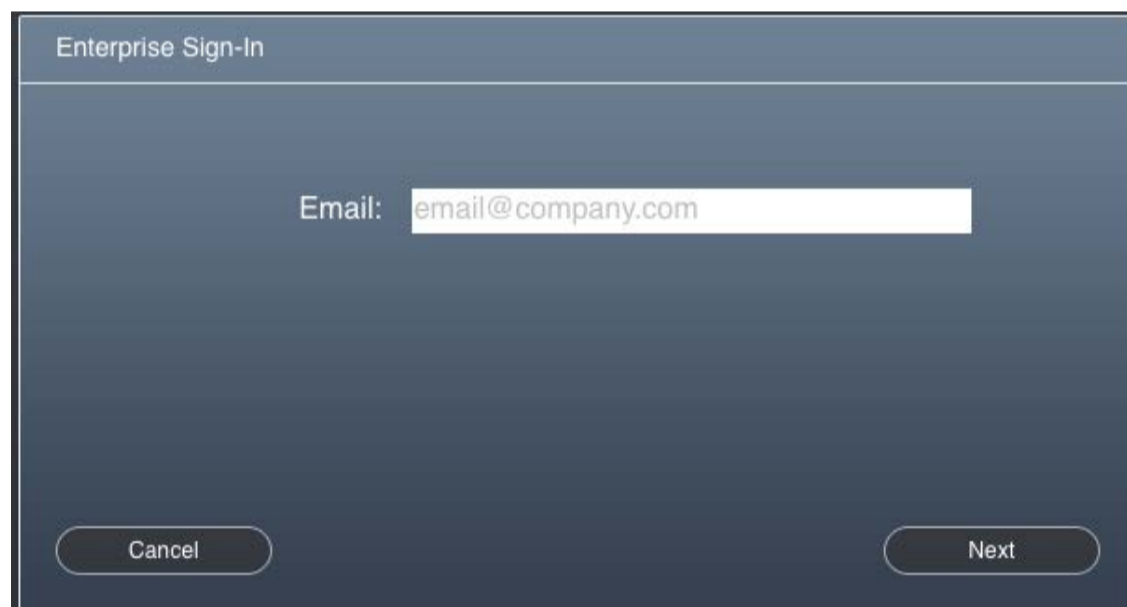


Sign in

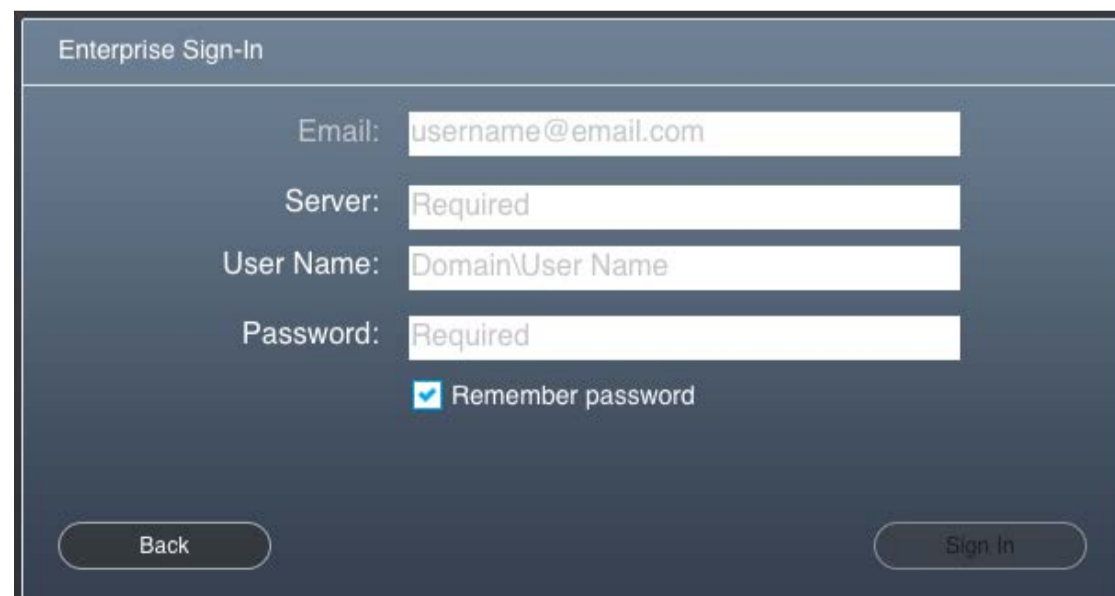
1. Double click the **RealPresence Desktop** icon in the Finder's Applications folder.
2. Select **Enterprise** and click the **Enter** button.



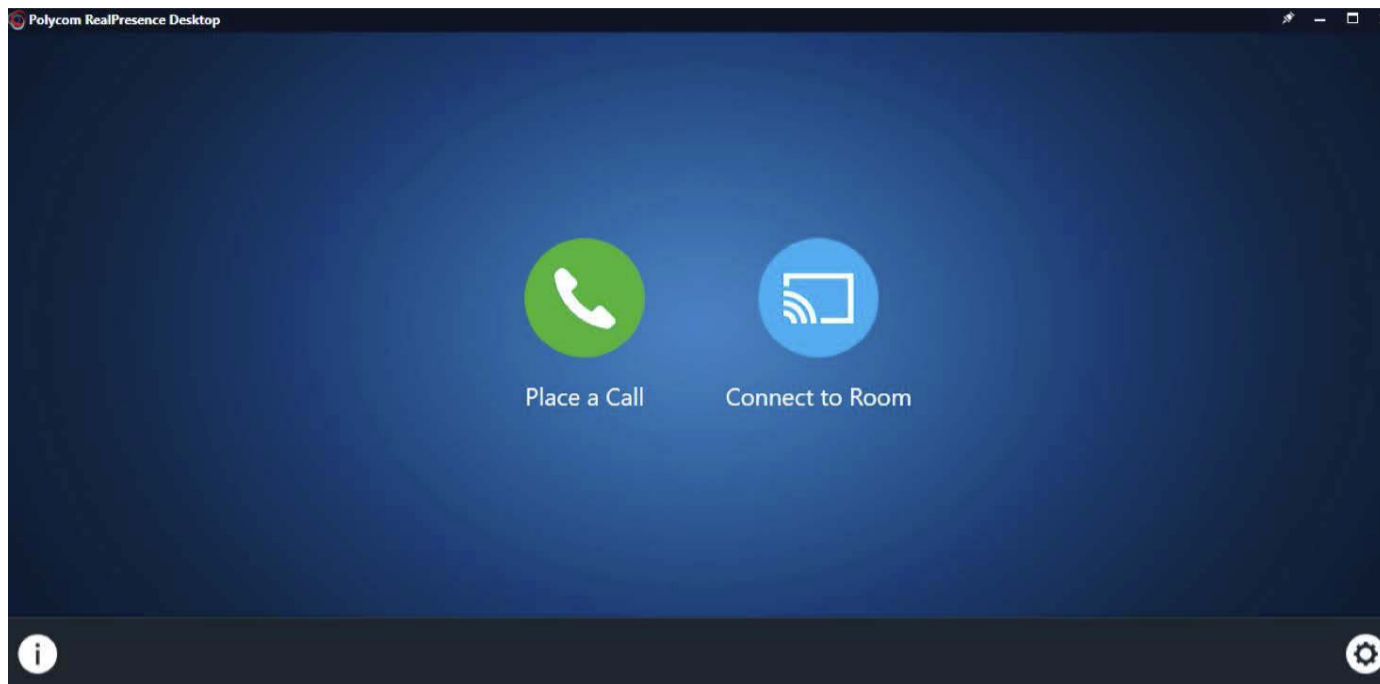
3. Enter your full email address and click the **Next** button.



4. Enter the credentials provided to you and click the **Sign In** button.



5. Click the **Place a Call** button to begin using RealPresence Desktop.



6. Access the corporate directory in the third tab above the number pad. You can select users already in the directory for point-to-point calls.

Dial SIP and H.323 calls with the information provided in your RP1 room instructions.



Contact

Sales:

sales@rp1cloud.com
1.844.204.0023

Customer Success:

customersuccess@rp1cloud.com
1.844.204.0023